

# “Intellectual Property and Eminent Domain”



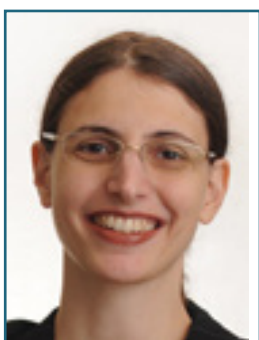
**Tuesday, April 21 | noon-1 p.m.**

Sidney R. Siben and Walter Siben Moot Courtroom, Room 308  
Hofstra Law, Hempstead, N.Y.

The well-known intellectual property and constitutional scholars on this panel will examine the relationship between eminent domain doctrine and intangible goods. They will discuss questions such as what types of situations would give rise to constitutionally cognizable takings, how different definitions of public use affect the government’s ability to take intellectual property, and how we should draw the boundaries between government-driven infringements and takings.

This session qualifies for 1 (one) transitional/nontransitional CLE credit in Professional Practice.

PANELISTS:



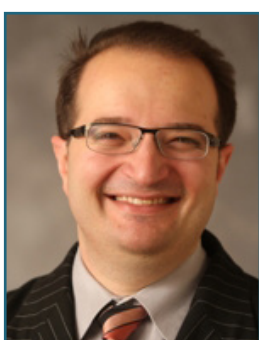
**IRINA D. MANTA**

Associate Professor of Law, Director of the Hofstra Center for Intellectual Property Law, Maurice A. Deane School of Law at Hofstra University



**CLARISA LONG**

Max Mendel Shaye Professor of Intellectual Property Law, Columbia Law School



**GREGORY DOLIN**

Associate Professor of Law, Co-Director of the Center for Medicine and Law, University of Baltimore School of Law



**ILYA SOMIN**

Professor of Law, George Mason University School of Law